

INDUSTRIAL/WAREHOUSE
FOR LEASE AVAILABLE NOW

Pacific Business Park

4910 NE 122nd Ave, Portland, OR 97230
Building 1



Key Features



2,250 sq. ft. shell



709 sq. ft. office



1 grade door

14' clear height

Upgraded finishes

LED lighting throughout

Excellent access to
Interstates 84 and 205

2.7 miles to PDX International
Airport

Lease Rate (NNN):

\$0.90/sq. ft. shell

\$1.10/sq. ft. office

Jake Bigby

jakeb@pactrust.com

Caitlin Knecht

caitlink@pactrust.com

503.624.6300

Owned & Managed by

PACTRUST

INDUSTRIAL/WAREHOUSE
FOR LEASE AVAILABLE NOW

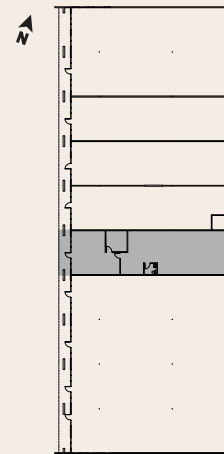
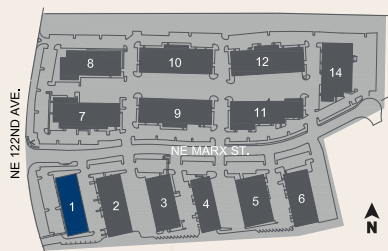
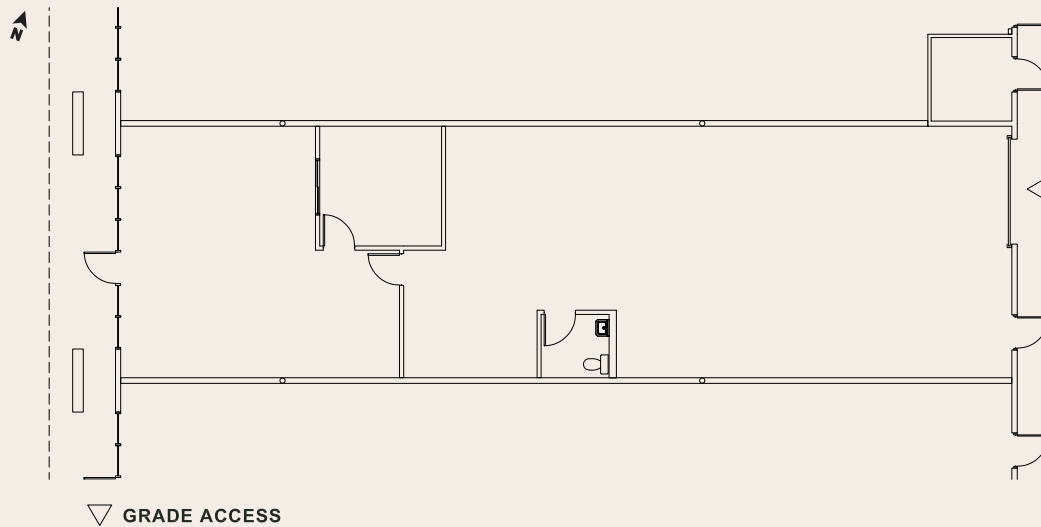
Owned & Managed by

PacTrust

Space Plan

4910 NE 122nd Ave, Building 1, Portland, OR 97230

2,250 Sq. Ft.



Jake Bigby
jakeb@pactrust.com

Caitlin Knecht
caitlink@pactrust.com

503.624.6300
www.PacTrust.com